

# VAST ARRAY OF RESOURCES

## LOCAL

- **Beverly Main Streets**  
[www.beverlymainstreets.org](http://www.beverlymainstreets.org)
- **Greater Beverly Chamber of Commerce**  
<https://greaterbeverlychamber.com/>
- **Beverly Farms Merchants Association**  
[www.beverlyfarms.org/merchants.shtml](http://www.beverlyfarms.org/merchants.shtml)
- **North Shore Innoventures**  
<https://nsiv.org/>

## REGIONAL

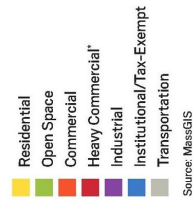
- **Creative Collective**  
<https://www.creativecollectivema.com/>
- **Essex County Community Foundation**  
<https://www.eccf.org/arts-and-culture/>
- **Enterprise Center at Salem State University**  
[www.enterprisectr.org](http://www.enterprisectr.org)
- **Massachusetts Small Business Development Center**  
<http://sbdc.salemstate.edu/>
- **North Shore Alliance for Economic Development**  
[www.nsecdevelopment.com](http://www.nsecdevelopment.com)
- **North Shore Chamber of Commerce**  
[www.northshorechamber.org](http://www.northshorechamber.org)
- **MASSHIRE North Shore Workforce Board**  
[www.northshorewib.com](http://www.northshorewib.com)
- **SCORE Northeast**  
[www.scorenemass.org](http://www.scorenemass.org)

## STATE

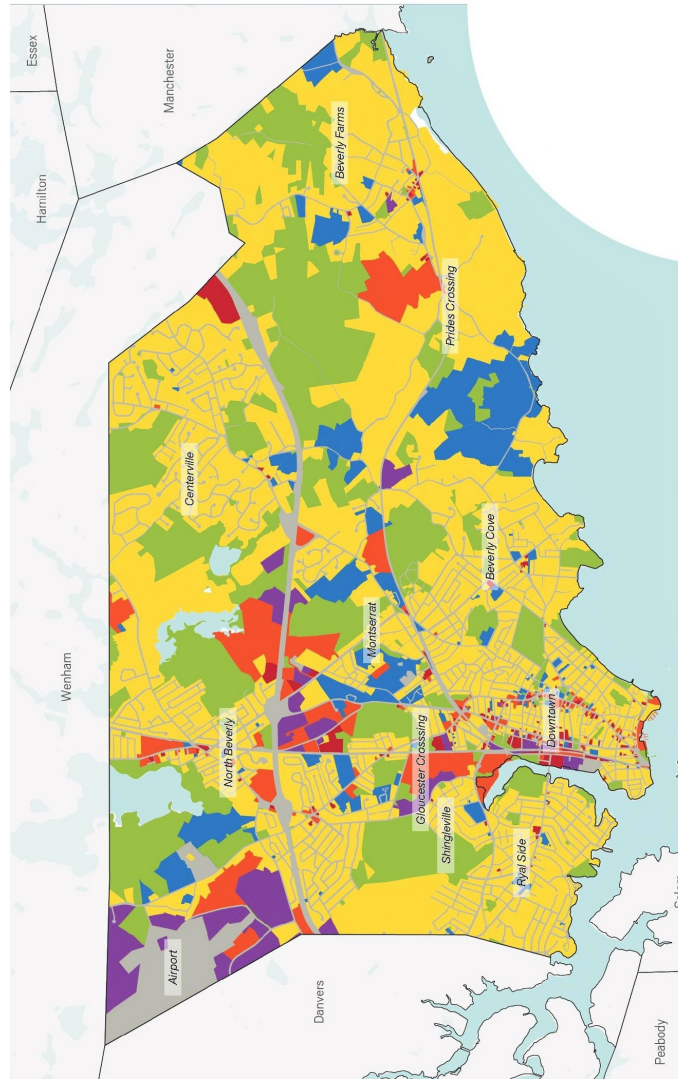
- **Massachusetts Division of Unemployment Assistance**  
[www.mass.gov/lwd/unemployment-insur/](http://www.mass.gov/lwd/unemployment-insur/)
- **Massachusetts Office on Business Development**  
[www.mass.gov/hed/economic/eohed/bd/](http://www.mass.gov/hed/economic/eohed/bd/)
- **Massachusetts Office of Consumer Affairs & Business Reg.**  
[www.mass.gov/ocabr/](http://www.mass.gov/ocabr/)
- **Massachusetts Supplier Diversity Office**  
<https://www.mass.gov/orgs/supplier-diversity-office-sdo>
- **Massachusetts State Permit Regulatory Office**  
[www.mass.gov/hed/economic/eohed/pro/](http://www.mass.gov/hed/economic/eohed/pro/)
- **Massachusetts Executive Office of Public Safety & Security**  
[www.mass.gov/eopss/consumer-prot-and-bus-lic/license-type/](http://www.mass.gov/eopss/consumer-prot-and-bus-lic/license-type/)

## FEDERAL

- **Business USA**  
[business.usa.gov/](http://business.usa.gov/)
- **United States Small Business Administration**  
<https://www.sba.gov/>



\*Heavy commercial uses pertain to types of retail services that are semi-industrial in nature, such as vehicle repair shops and storage facilities. These uses typically do not require high pedestrian activity or visibility, and are usually not compatible with consumer-oriented retail activities.



# Start Your Business



Cabot Street, Beverly

## Here in Beverly!

We Look Forward to Doing Business With You



Mayor Michael P. Cahill



"Thank you for believing in Beverly and expressing your confidence by building your business here in Beverly. Together let us shape the brightest future we can imagine, and our City will thrive for years to come."

**Mayor Michael P. Cahill**

# PREPARING TO OPEN A BUSINESS?



Cummings Center

The Commonwealth offers a step by step guide with the below checklist that is very instructive for new entrepreneurs as well as the experienced.

The link to their website & checklist is: [www.mass.gov/portal/business/start-business/new-business-steps.html](http://www.mass.gov/portal/business/start-business/new-business-steps.html)

# WHY COME TO BEVERLY?

## DINING SHOPPING & ENTERTAINMENT

- Family, friends, clients and colleagues will enjoy the many and varied dining, shopping and entertainment options.

## RECREATION

- Recreation opportunities are unlimited with biking, walking, and hiking trails, nature preserves, conservations areas, parks, and 12 miles of coastline including several beaches with kayak and boat ramp access.

## VARIETY OF HOUSING OPPORTUNITIES

- Beverly offers many housing options from a single family home along the oceanfront to a cozy cape-style residence to a sleek downtown apartment.

## MEDICAL SERVICES

- Extensive availability of medical services are provided throughout the City.

## EDUCATION

- Beverly is an epicenter of academic activity with a robust public school system, a wide variety of private, primary and secondary schools and two four-year colleges.

## TRANSPORTATION ACCESS

- Unparalleled access with a regional airport, five commuter rail stations, and proximity to major highways so that clients and colleagues as well as deliveries can quickly and easily find their way to your door.



North Shore Crossing; Photo credit: northshorecrossing.com

# STEPS TO STARTING A BUSINESS IN BEVERLY!

*We want to work with you.*

## STEP ONE SELECT YOUR LOCATION

- Print out a zoning map and city street map at: <https://www.beverlyma.gov/182/City-Maps>
- Explore different locations to acquaint yourself with the area and understand issues that may be important to the success of your business.

## STEP TWO CONFIRM THE ZONING

Once you have identified one or more potential sites:

- Contact the Municipal Inspections Department to confirm zoning for the area to ensure your type of business is allowed in that area under the zoning ordinance.

## STEP THREE CONTACT RELEVANT MUNICIPAL DEPARTMENTS

Departments you may need to contact depending upon the nature of your business include:

- Municipal Inspections Department (e.g., confirm zoning, seek a building permit, discuss signage)
- Health Department (e.g., opening a restaurant, tanning facility, aquatic therapy center)
- City Clerk's Office (to obtain a local business certificate)
- Licensing Board for Alcoholic Beverages and Entertainment (e.g., providing live entertainment; serving alcohol)
- Planning Department (e.g., significant renovations, new construction, changing/creating signage, build near wetlands)
- Fire Department (e.g., proper placement of smoke/CM detectors)
- Police Department (e.g., to discuss possible security measures, employee training)
- Engineering (e.g., obtain drainage alteration permits, erosion control form)

Our Permitting Liaison, Denise Deschamps, will help to guide you throughout the process of establishing a business in Beverly.

Please contact Denise with your questions at: Email: [ddeschamps@beverlyma.gov](mailto:ddeschamps@beverlyma.gov)  
Phone: (978) 605-2356



# CHECKLIST

- Plan Ahead Before Going Into Business
- Write A Business Plan
- Get Training and Counseling
- Choose a Location
- Research and Obtain Financing
- Choose a Business Structure
- File for a "Doing Business As" Certificate
- Register Your Business with the State
- Obtain a Federal Employer Tax ID (EIN)
- Become Familiar with Tax Rules and Regulations
- Understand Employer Regulations and Responsibilities
- Obtain Business Licenses and Permits